

IDEAL 4000

1,3

U_w voor $U_g = 1,1$
(aluminium frame)

1,1

U_g [W/m²K]

2

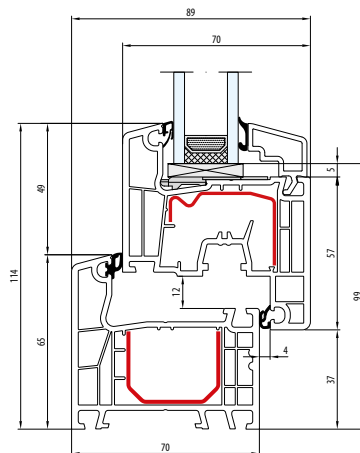
afdichtingen

5

kamers

70-162

inbouwdiepte (mm)



R

Renovatieprofiel

M

Monoblock profiel

A

Alu-skin

CL

Classic-line

RL

Round-line

IDEAL 4000 NEW

1,3

U_w voor $U_g = 1,1$
(aluminium frame)

1,4

U_i [W/m²K]

2

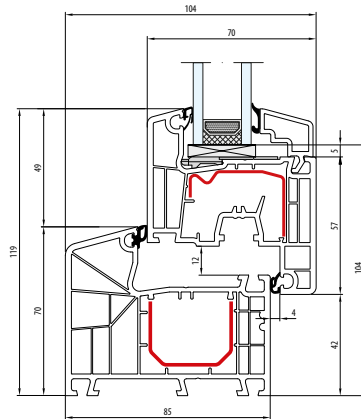
afdichtingen

5/6

kamers

85

inbouwdiepte (mm)



CL

Classic-line

RL

Round-line



IDEAL 5000

1,2

U_w voor $U_g = 1,1$
(aluminium frame)

1,2

U_i [W/m²K]

3

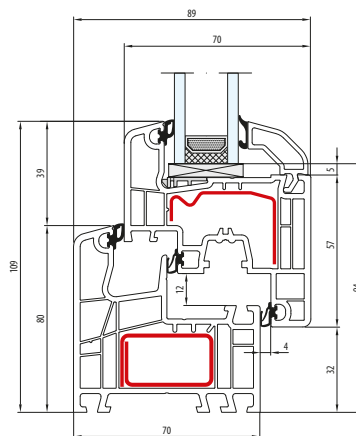
afdichtingen

5

kamers

70

inbouwdiepte (mm)



R

Renovatieprofiel

A

Alu-skin

CL

Classic-line

RL

Round-line

IDEAL 7000 NEW

1,2

U_w voor $U_g = 1,1$
(aluminium frame)

1,1

U_f [W/m²K]

2

afdichtingen

6

kamers

85

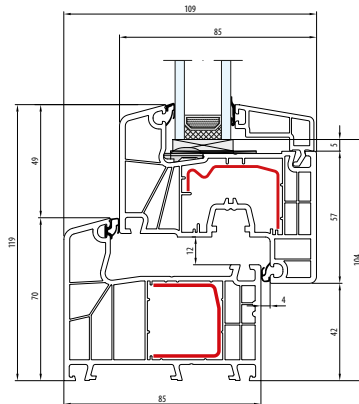
inbouwdiepte (mm)

A

Alu-skin

CL

Classic-line



IDEAL 8000

0,74

U_w voor $U_g=0,5$
(aluminium frame)

1,0

U_f [W/m²K]

3

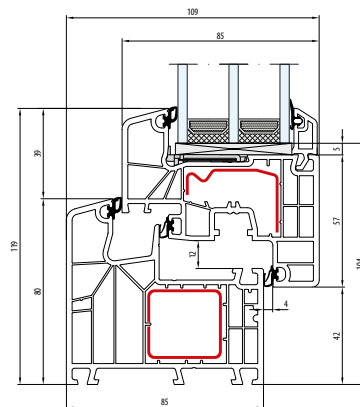
afdichtingen

6

kamers

85

inbouwdiepte (mm)



A

Alu-skin

CL

Classic-line

RL

Round-line

IDEAL 8000 ENERGETO

0,72

U_w voor $U_g=0,5$
(aluminium frame)

0,94

U_f [W/m²K]

3

afdichtingen

6

kamers

85

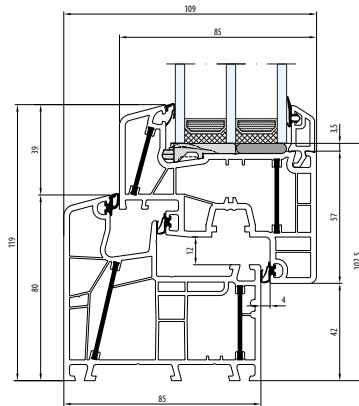
inbouwdiepte (mm)

A

Alu-skin

CL

Classic-line



ENERGETO NEO

0,73

U_w voor $U_g=0,5$
(Swisspacer Ultimate
afstandhouder)

1,1

U_i [W/m²K]

3

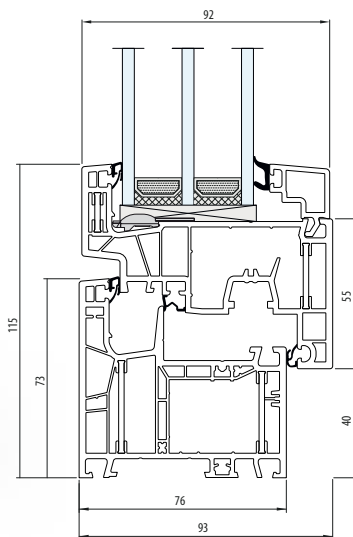
afdichtingen

6

kamers

76

inbouwdiepte (mm)



QL

Qube-line

IDEAL NEO MD

0,79

U_w voor $U_g=0,5$
(Swisspacer Ultimate
afstandhouder)

1,2

U_f [W/m²K]

3

afdichtingen

5/6

kamers

76

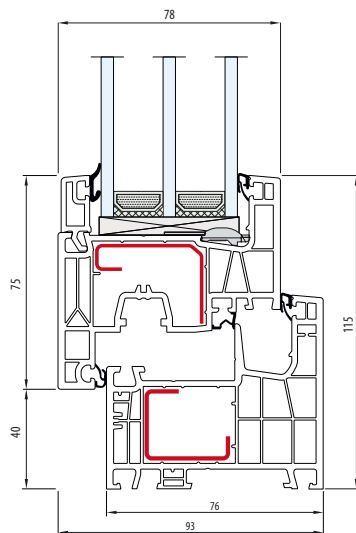
inbouwdiepte (mm)

A

Alu-skin

CL

Classic-line



IDEAL NEO **AD**

0,80

U_w voor $U_g=0,5$
(Swisspacer Ultimate
afstandhouder)

1,2

U_i [W/m²K]

2

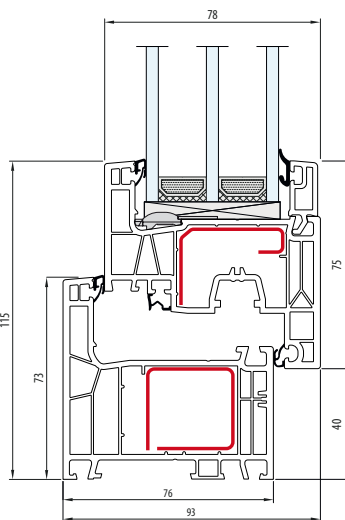
afdichtingen

5/6

kamers

76

inbouwdiepte (mm)



A

Alu-skin

QL

Qube-line

IDEAL 7000 NL

1,3

U_w voor $U_g = 1,1$
(aluminium frame)

1,1

U_i [W/m²K]

2

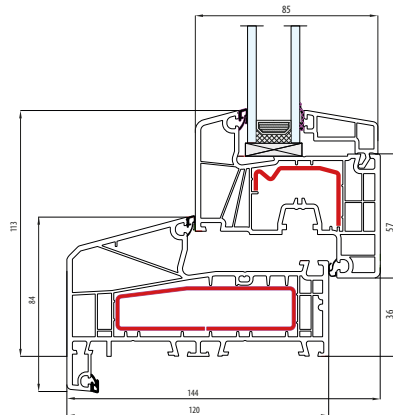
afdichtingen

5

kamers

120

inbouwdiepte (mm)



CL

Classic-line



NORDLINE

1,3

U_w voor $U_g = 1,1$
(aluminium frame)

1,5

U_i [W/m²K]

2

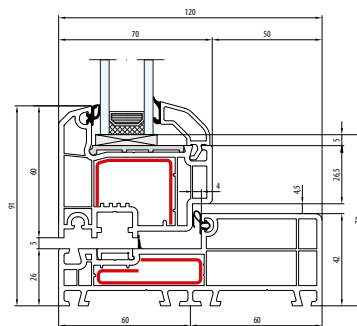
afdichtingen

4/5

kamers

120

inbouwdiepte (mm)



CL

Classic-line

IDEAL 70

1,2

U_w voor $U_g = 1,1$
(aluminium frame)

1,4

U_i [W/m²K]

2

afdichtingen

5

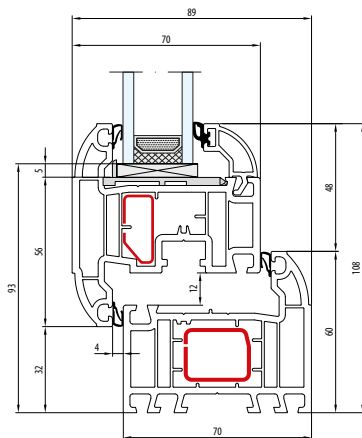
kamers

70

inbouwdiepte (mm)

RL

Round-line



IDEAL 4000 CASEMENT

1,3

U_w voor $U_g = 1,1$
(aluminium frame)

1,4

U_i [W/m²K]

2

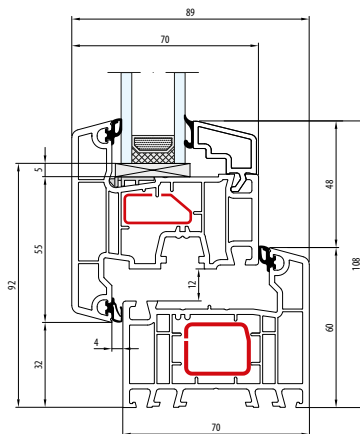
afdichtingen

5

kamers

70

inbouwdiepte (mm)

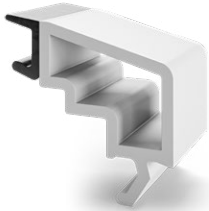


CL

Classic-line

ALUPLAST GLASLATTEN

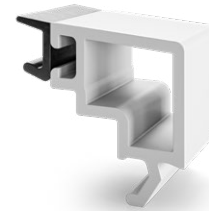
CLASSIC-LINE



ROUND-LINE



QUBE-LINE



BREEDTE VAN DE VULLING [mm]

4-39

Ideal **4000**, Ideal **4000 NEW**, Ideal **5000**, Nordline (**Vleugel**), Ideal **70**, Ideal **4000 Casement**

24-35

10-42

20-49

34-45

20-52

Ideal **7000**, Ideal **8000**, Energeto **8000**, Nordline (**Kader**)

17-46

31-42

17-48

Ideal **4000** (schuifraam 140x27)

22-50

—

22-54

Ideal **NEO AD/MD**

—

—

36-68

Energeto **NEO**